



German quality you can trust



Good furniture
needs good solutions:
Hettich furniture fittings

Technik für Möbel



Introduction



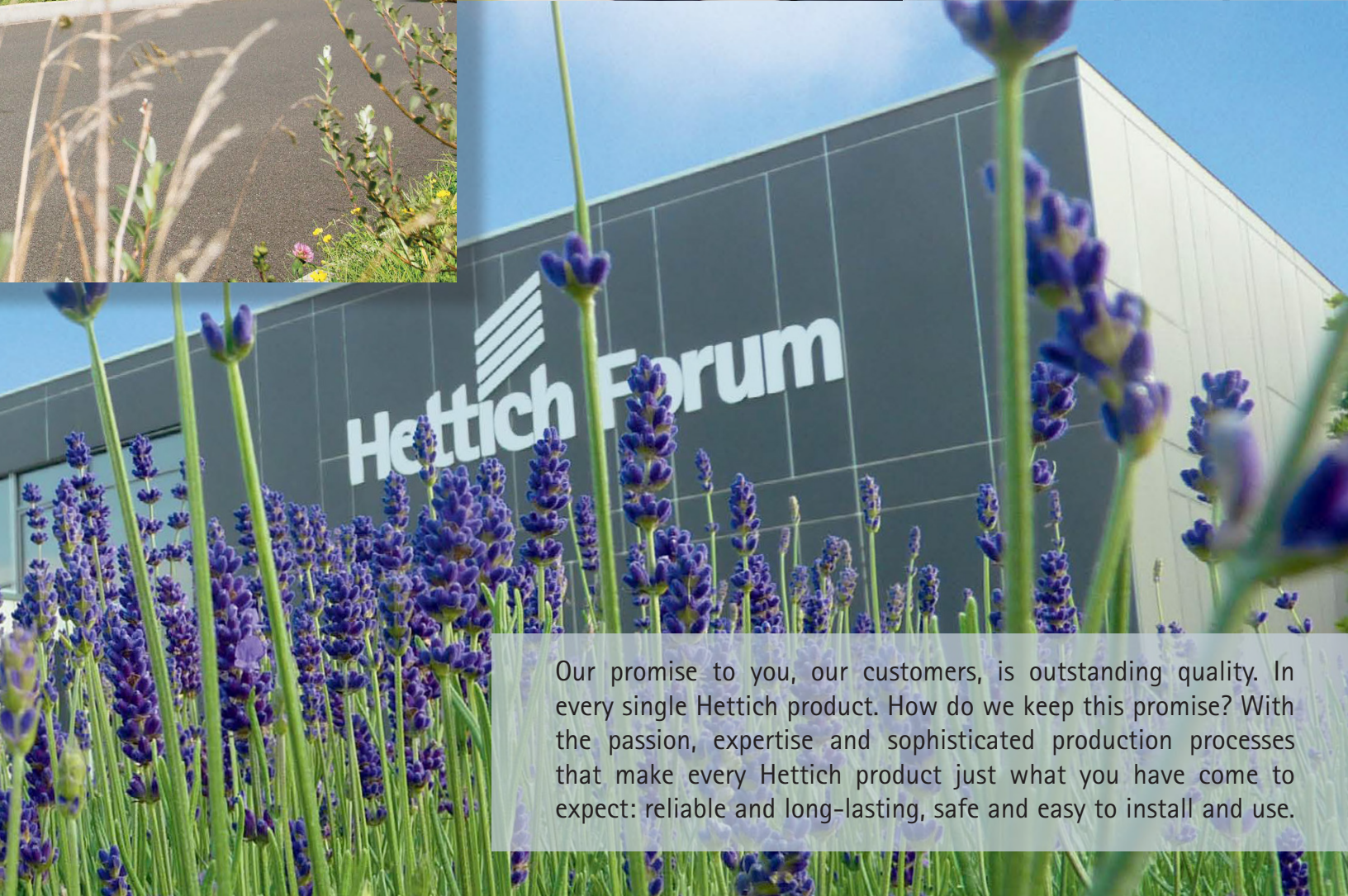
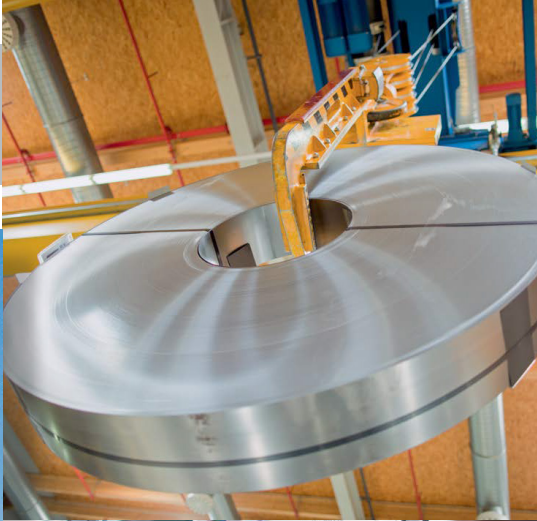
Outstanding engineering achievements.
Entrepreneurial courage.
And a reliable instinct for the needs of the market.

These are the cornerstones of Hettich's success - the same ones we've been building on for over 125 years. Back in 1888, Karl Hettich designed a machine that revolutionised the production of anchor escapements for Black Forest cuckoo clocks. In 1928, August Hettich turned towards the furniture industry with an innovation production line for piano hinges.



Encouraged by further achievements, brothers Paul, August and Franz Hettich set up a new company at Herford in 1930. Kirch lengern became headquarters in 1966. Our company has been a wholly-owned family business ever since - now with Dr. Andreas Hettich at the helm as the fourth-generation managing director.

Technology for furniture - our passion for over a century. Throughout the world, the Hettich brand stands for quality, innovation, reliability, and closeness to customers. Some 6,000 people at Hettich develop intelligent technology for furniture - with renewed commitment every day. Hettich is at home in Kirch lengern, Germany, where we create compelling solutions for people around the globe solutions that make a big difference in furniture and people's lives.



Hettich Forum

Our promise to you, our customers, is outstanding quality. In every single Hettich product. How do we keep this promise? With the passion, expertise and sophisticated production processes that make every Hettich product just what you have come to expect: reliable and long-lasting, safe and easy to install and use.

Kitchen and hallway, living room and study, bathroom and bedroom: every part of the home comes with its very own fascination. And the particular potential for new functions and convenience features. Hettich fitting solutions let you make optimum use of this potential. Because we develop and produce technology for furniture with a veritable feel good factor.



Right on trend in living rooms: large drawers that close gently and silently. Smoothly running sliding door systems with the ultimate convenience of Silent System. Flush fitted, handleless front panels for purist interior design. You will find all this and much more in this catalogue. Be inspired.



More information
and inspiration for
tomorrow's home:
[http://www.hettich.com/
short/406761](http://www.hettich.com/short/406761)



Summary Of Ranges



Hinges

Sensys Hinges	6-9
Sensys Hinges in Obsidian Black	10-11
Accessories	12-14



Drawer Systems

Atira Double Walled Drawer System	15
Accessories for Atira	16
ArciTech Double Walled Drawer System	17-18
Accessories for ArciTech	19
Organisation for Double Walled Drawer System	20



Drawer Runners for Wooden Drawers

Quadro Drawer Runners	22-24
KA Ball Bearing Runners	25



Sliding and Folding Door Systems

TopLine XL	26-27
TopLine L	28-29
SlidLine M	30-31
SlidLine 56	32-33
WingLine L	34-35
Wing 77	36-37





Stand apart from the competition

Outstanding furniture design doesn't stop at the hinges. The easy way to meet customer demands: with well balanced, award winning Sensys design.



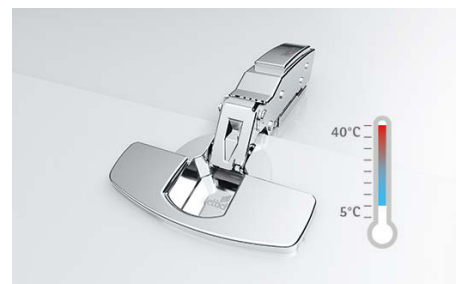
Less work

No adjustment necessary. No matter whether large or heavy, the door always closes reliably and gently, thanks to the unusually wide automatic angled plate of 35°.



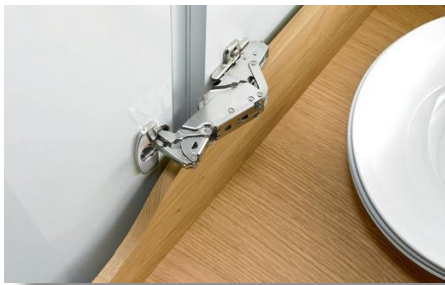
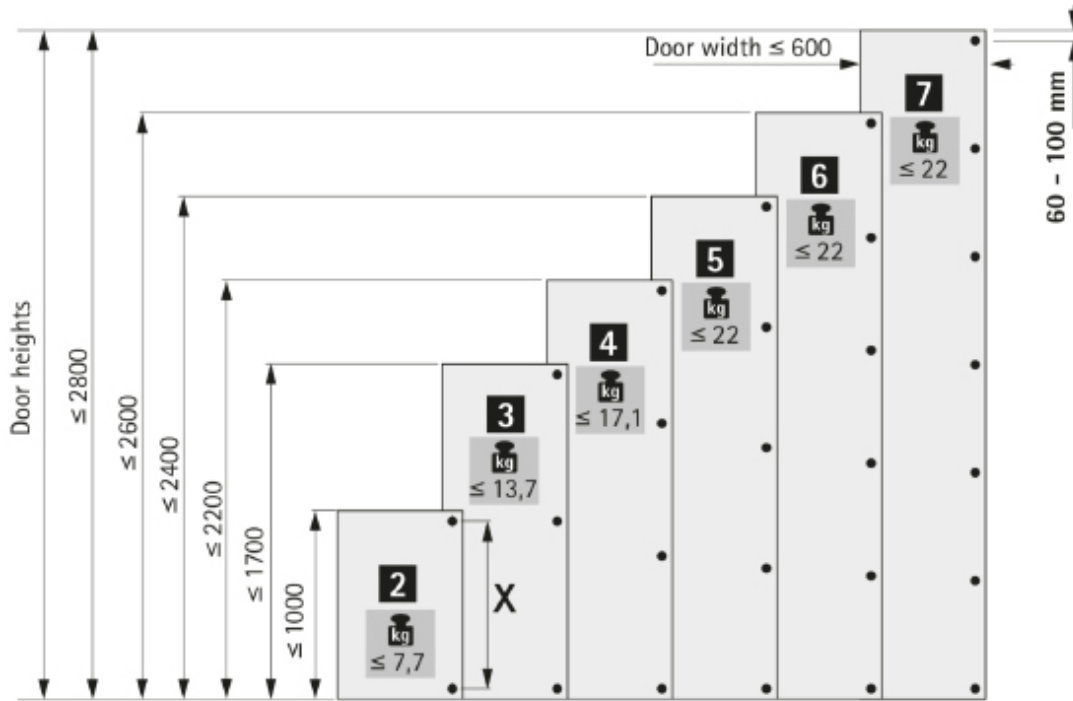
Reduce costs

Some commonly used door formats normally hung on 3 or more hinges can often be mounted with one hinge less, thanks to the best in class Silent System performance from Sensys.



Maximum customer satisfaction

No doors slamming when it's hot, no doors left standing open when it's cold. Sensys is optimised for reliable performance over a wide temperature range of + 5°C to + 40°C.



Zero protrusion

This permits the use of wide internal drawers without the need for spacer profiles, giving you maximum storage space in whatever cabinet dimension.



Sensys makes your furniture safer

The fast release button is elegantly concealed by the hinge arm. This reliably prevents the door from being released unintentionally.



Corrosion test

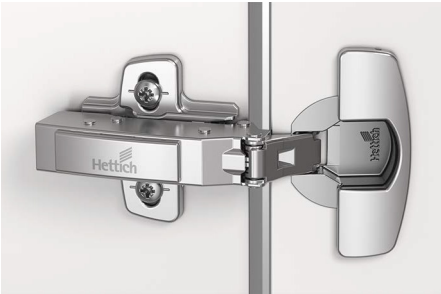
Hettich hinges satisfy the corrosion requirements under EN ISO 9227-2012 in accordance with the 48-hour neutral salt spray test (NSS) as well as DIN EN ISO 6270-2-2012 in accordance with the 96-hour alternating condensation water climate test with alternating humidity and air temperature (AHT).



Thick doors? Not a problem

The Sensys thick door hinge confidently moves even heavy doors in a way that's noticeably felt. As a capable performer, it gives you creative design flexibility - for furniture design to tick all the boxes with your clients.

Sensys Hinges



Sensys 8646i For door thickness 10 – 16mm, opening angle 110°

Overlay	Silent System	9094000	RM22.00
Half Overlay		9094010	RM23.00
Inset		9094020	RM24.00



Sensys 8645i For door thickness 15 – 24mm, opening angle 110°

Overlay	Silent System	9071205	RM15.00
Half Overlay		9071206	RM16.00
Inset		9071207	RM17.00



Sensys 8631i For door thickness 15 – 32mm, opening angle 95°

Overlay	Silent System	9090260	RM17.00
Half Overlay		9090270	RM18.00
Inset		9090280	RM19.00



Sensys 8657i For zero protrusion hinge, opening angle 165°

Overlay	Silent System	9099540	RM35.00
Half Overlay		9099550	RM36.00



Sensys 8675
For door thickness 15 - 24mm, opening angle 110°

Overlay	Unsprung	9073662	RM13.00
Half Overlay		9073663	RM14.00
Inset		9073664	RM15.00



Sensys 8638i
For 19mm wide aluminium framed profiles, opening angle 95°

Overlay	Silent System	9072524	RM22.00
Half Overlay		9072525	RM23.00
Inset		9072526	RM24.00



Sensys 8639i W90
For door thickness 15 - 28mm, opening angle 95°

Inset	Silent System	9088021	RM34.00
-------	---------------	---------	---------



Sensys 9930
For corner cabinet folding doors, opening angle 50° / 65°

Overlay	Self-Closing	9090109	RM21.00
---------	--------------	---------	---------

Sensys Hinges in Obsidian Black



Sensys 8646i

For door thickness 10 – 16mm, opening angle 110°

Overlay	Silent System	9091761	RM24.00
Half Overlay		9091762	RM25.00
Inset		9091763	RM26.00



Sensys 8645i

For door thickness 15 – 24mm, opening angle 110°

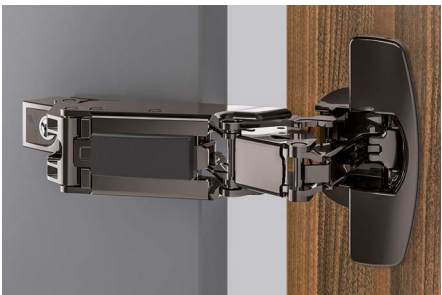
Overlay	Silent System	9091738	RM17.00
Half Overlay		9091739	RM18.00
Inset		9091740	RM19.00



Sensys 8631i

For door thickness 15 – 32mm, opening angle 95°

Overlay	Silent System	9091753	RM19.00
Half Overlay		9091755	RM20.00
Inset		9091756	RM21.00



Sensys 8657i

For zero protrusion hinge, opening angle 165°

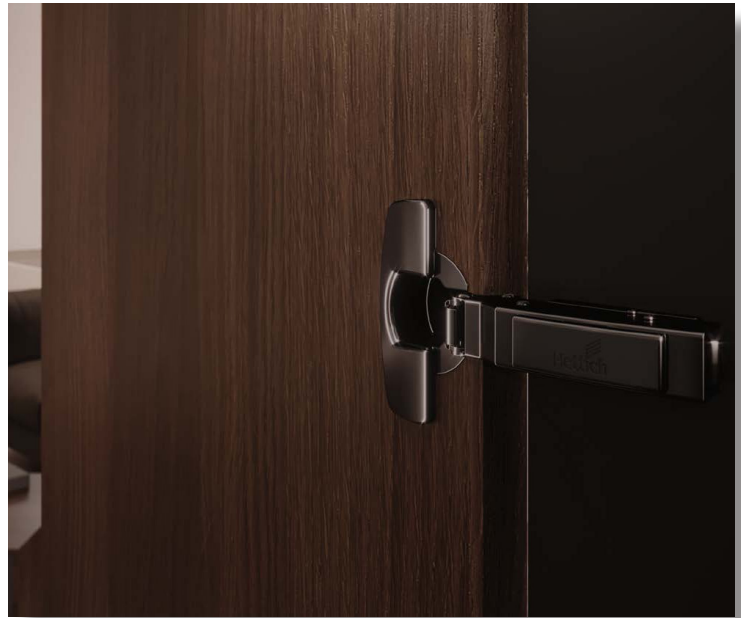
Overlay	Silent System	9091767	RM38.00
Half Overlay		9091768	RM39.00



Sensys 8675

For door thickness 15 – 24mm, opening angle 110°

Overlay	Unsprung	9091741	RM14.00
Half Overlay		9091742	RM15.00
Inset		9091743	RM16.00



Accessories

Mounting plates for Sensys fast-assembly hinges



Mounting Option	Height Adjustment mm	Distance mm	Hole Line Distance mm	Order No.	Unit Price
For screwing on in obsidian black	Oblong hole, ± 3	0.0	37	9091799	RM2.00
		1.5		9091800	
		3.0		9091801	RM2.50
		5.0		9091802	RM3.50



Mounting Option	Height Adjustment mm	Distance mm	Hole Line Distance mm	Order No.	Unit Price
For screwing on	Oblong hole, ± 3	0.0	37	9071575	RM1.50
		1.5		9071576	
		3.0		9071577	RM2.00
		5.0		9071578	RM3.00



Mounting Option	Height Adjustment mm	Distance mm	Hole Line Distance mm	Order No.	Unit Price
With premounted chipboard screws in obsidian black	Eccentric, ± 2	0.0	37	9091803	RM3.50
		1.5		9091804	
		3.0		9091805	RM4.00
		5.0		9091806	RM5.00



Mounting Option	Height Adjustment mm	Distance mm	Hole Line Distance mm	Order No.	Unit Price
With premounted chipboard screws	Eccentric, ± 2	0.0	37	9071670	RM3.00
		1.5		9071671	
		3.0		9071672	RM3.50
		5.0		9071673	RM4.50



Mounting Option	Height Adjustment mm	Distance mm	Hole Line Distance mm	Order No.	Unit Price
For screwing on in obsidian black	Oblong hole, ± 1.6	0.5	20	9091815	RM4.50
		3.0		9091816	RM5.00



Mounting Option	Height Adjustment mm	Distance mm	Hole Line Distance mm	Order No.	Unit Price
For screwing on	Oblong hole, ± 1.6	0.5	20	9088244	RM4.00
		3.0		9088245	RM4.50

Accessories for Sensys hinges



Version	Type	Order No.	Unit Price
Hinge cup cover cap in obsidian black	Sensys	9091822	RM1.00



Version	Type	Order No.	Unit Price
Hinge cup cover cap	Sensys	9088251	RM1.00



Version	Type	Order No.	Unit Price
Hinge arm cup cover cap in obsidian black	Sensys	9091820	RM1.00
Hinge arm cover cap with Hettich logo in obsidian black		9091821	



Version	Type	Order No.	Unit Price
Hinge arm cup cover cap	Sensys	9088249	RM0.50
Hinge arm cover cap with Hettich logo		9088250	



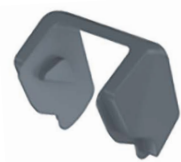
Version	Type	Order No.	Unit Price
Hinge arm cup cover cap	Sensys 8657i	9099870	RM1.50
Hinge arm cover cap with Hettich logo		9099871	



Version	Type	Order No.	Unit Price
Soft opening for overlay hinge	Sensys 8657i	9100037	RM1.50
Soft opening for half overlay hinge		9100116	



Version	Type	Order No.	Unit Price
Opening angle limiter for Sensys 8645i	Limitation from 110° to 85°	9072540	RM0.50



Version	Type	Order No.	Unit Price
Opening angle limiter for Sensys 8657i	Limitation from 165° to 105° or 120°	9090756	RM1.00
	Limitation from 165° to 90° or 135°	9090864	



Version	Type	Order No.	Unit Price
Adapter for reducing drilling depth	Thickness 1.8mm	9073595	RM1.00
	Thickness 2.7mm	9073596	RM1.50

Push to open for hinged doors

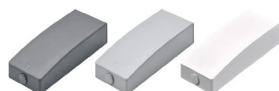


Version	Application	Stroke mm	Colour	Order No.	Unit Price
Pin	Self-Closing Hinge	37	Anthracite	9089626	RM18.50
			Light-grey	9089601	
			White	9089587	

Version	Application	Stroke mm	Colour	Order No.	Unit Price
Pin Strong	Self-Closing Hinge	37	Anthracite	9089636	RM19.00
			Light-grey	9089611	
			White	9089597	

Version	Application	Stroke mm	Colour	Order No.	Unit Price
Magnet	Unsprung	37	Anthracite	9089630	RM22.00
			Light-grey	9089605	
			White	9089591	

Push to open Silent for hinged doors



Colour	Stroke mm	Order No.	Unit Price
Anthracite	37	9239087	RM140.50
Light-grey		9239099	
White		9239088	

Atira Double Walled Drawer System



Atira 70

Nominal Length mm	Order No.			Unit Price
	Silver	White	Anthracite	
470	A9196195	A9196236	A9196277	RM83.00



Atira ID 70

Nominal Length mm	Order No.			Unit Price
	Silver	White	Anthracite	
470	ID9196195	ID9196236	ID9196277	RM217.00



Atira 144

Nominal Length mm	Order No.			Unit Price
	Silver	White	Anthracite	
470	A9196202	A9196243	A9196284	RM128.00



Atira ID 144

Nominal Length mm	Order No.			Unit Price
	Silver	White	Anthracite	
470	ID9196202	ID9196243	ID9196284	RM332.00



Atira 176

Nominal Length mm	Order No.			Unit Price
	Silver	White	Anthracite	
470	A9196216	A9196257	A9196298	RM158.00

Accessories for Atira



Aluminium front panel

Length mm	Order No.			Unit Price
	Silver	White	Anthracite	
2000	9194764	9194765	9194766	RM223.00



Railing for aluminium front panel

Length mm	Order No.			Unit Price
	Silver	White	Anthracite	
2000	9194614	9194615	9194616	RM65.00



Quadro V6 runner with Push to open Silent

*Carcase side thickness 16mm

*Installed width (EB)12.5mm

Nominal Length mm	Weight Tolerance kg	Order No.	Unit Price
470	30	9243730	RM92.00
	50	9243781	RM115.50



Push to open Silent opening system

Nominal Length mm	Weight Tolerance kg	Order No.	Unit Price
470	30	9240163	RM133.00
	50	9240164	



Quadro V6 runner with Silent System

*Installed width (EB)12.5mm

Nominal Length mm	Weight Tolerance kg	Order No.	Unit Price
470	30	0045302	RM92.00
	50	0048355	RM115.50

ArciTech Double Walled Drawer System



ArciTech 94

Nominal Length mm	Order No.				Unit Price
	White	Silver	Anthracite	Champagne	
500	9149302	9150683	9150526	9182500	RM110.00



ArciTech ID 94

Nominal Length mm	Order No.				Unit Price
	White	Silver	Anthracite	Champagne	
500	ID9149302	ID9150683	ID9150526	ID9182500	RM230.00



ArciTech 186 (94mm base)

Nominal Length mm	Order No.				Unit Price
	White	Silver	Anthracite	Champagne	
500	9149320	9150703	9150543	9182402	RM145.00



ArciTech ID 186 (94mm base)

Nominal Length mm	Order No.				Unit Price
	White	Silver	Anthracite	Champagne	
500	ID9149320	ID9150703	ID9150543	ID9182402	RM355.00



ArciTech 218 (94mm base)

Nominal Length mm	Order No.				Unit Price
	White	Silver	Anthracite	Champagne	
500	9194350	9150724	9150573	9182418	RM195.00



ArciTech 126

Nominal Length mm	Order No.				Unit Price
	White	Silver	Anthracite	Champagne	
500	9149312	9150930	9150534	9182491	RM130.00



ArciTech ID 126

Nominal Length mm	Order No.				Unit Price
	White	Silver	Anthracite	Champagne	
500	ID9149312	ID9150930	ID9150534	ID9182491	RM280.00



ArciTech 186 (126mm base)

Nominal Length mm	Order No.				Unit Price
	White	Silver	Anthracite	Champagne	
500	9149341	9150938	9150565	9182410	RM170.00



ArciTech ID 186 (126mm base)

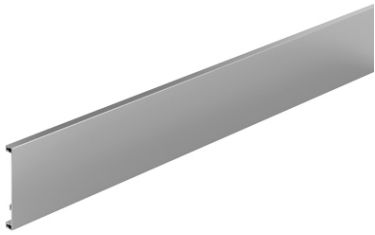
Nominal Length mm	Order No.				Unit Price
	White	Silver	Anthracite	Champagne	
500	ID9149341	ID9150938	ID9150565	ID9182410	RM370.00



ArciTech 218 (126mm base)

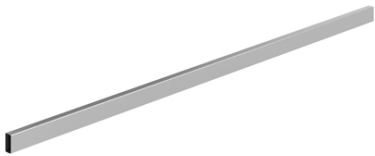
Nominal Length mm	Order No.				Unit Price
	White	Silver	Anthracite	Champagne	
500	9149371	9150946	9150829	9182426	RM180.00

Accessories for ArciTech



Aluminium front panel

Length mm	Order No.				Unit Price
	Silver	White	Anthracite	Champagne	
2000	9192204	9192206	9192205	9192207	RM234.50



Railing for aluminium front panel

Length mm	Order No.				Unit Price
	Silver	White	Anthracite	Champagne	
2000	9182706	9182714	9182712	9182716	RM48.50



Actro drawer runner

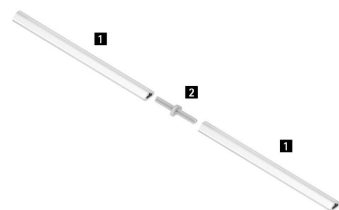
* Installed width (EB) 15mm

Nominal Length	Weight Tolerance kg	Order No.	Unit Price
500mm	40	9240873	RM145.00
	60	9240878	RM155.00
	80	9240881	RM165.00



Push to open Silent opening system

Nominal Length mm	Weight Tolerance kg	Order No.	Unit Price
500	40	9241050	RM132.50
	60	9241051	



Optional: Synchronisation (both Atira & ArciTech)

* Recommended for carcass widths of 600 mm and above

Article	Order No.	Unit Price
Synchronisation bar	9236718	RM43.00
Connectors	9221295	RM3.50

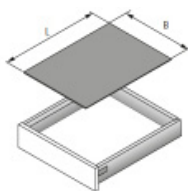
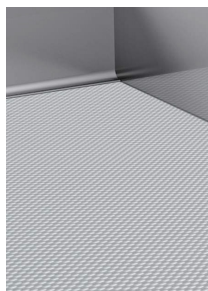
Organisation for Double Walled Drawer System



OrgaTray 440

Drawer Type	Depth mm	Width mm	Order No.				Unit Price
			Silver	White	Anthracite	Champagne	
InnoTech Atira / ArciTech	441-520	251-300	9194932	9194963	9194994	9202795	RM49.00
		301-350	9194933	9194964	9194995	9202796	RM52.00
		351-400	9194934	9194965	9194996	9202797	RM55.00
		401-450	9194935	9194966	9194997	9202798	RM58.00
		451-500	9194936	9194967	9194998	9202799	RM61.00
		501-600	9194937	9194968	9194999	9202800	RM68.00
		601-700	9194938	9194969	9195000	9202801	RM120.00
		701-800	9194939	9194970	9195001	9202803	RM126.00
		801-900	9194940	9194971	9195002	9202804	RM133.00
		901-1000	9194941	9194972	9195003	-	RM140.00
	1091-1150	9194942	9194973	9195004	9202806	RM150.00	

Drawer Type	Trimmed Width mm	Trimmed Depth mm
InnoTech Atira	LB - 62	NL - 7.7
ArciTech	LB - 67	NL - 27



Anti-slip mat

Drawer Type	Nominal Length mm	Width mm	Order No.				Unit Price
			Silver	White	Anthracite	Champagne	
InnoTech Atira	470	500	9209533.01	9209572.01	9209579.01	-	RM29.50
		1000	9209533.02	9209572.02	9209579.02	-	RM58.50
ArciTech	500	500	9209580.01	9209573.01	9209580.01	9209584.01	RM30.00
		1000	9209580.02	9209572.02	9209580.02	9209584.02	RM59.00



Quadro Drawer Runner



Quadro S – Full Extension Runner

Length mm	Load kg	Feature	Order No.	Unit Price
250	30	Silent System	9247462	RM60.00
300			9247463	RM61.50
350			9247464	RM63.00
400			9247474	RM64.50
450			9247477	RM66.00
500			9247479	RM67.50



Quadro V6 – Full Extension Runner

Length mm	Load kg	Feature	Order No.	Unit Price
250	30	Silent System	9135983	RM80.00
300			0045285	RM82.00
350			0045287	RM84.00
400			0045289	RM86.00
450			0045291	RM88.00
500			0045293	RM90.00
550	30	Push to Open	0045295	RM92.00
600			0045297	RM94.00
250			9135984	RM87.00
300			9135985	RM89.00
350			9135987	RM90.00
400			9135989	RM91.00
450			9135991	RM93.00
500			9135993	RM95.00
550	9135995	RM97.00		





Quadro V6 Full Extension Runner with Silent System Bottom Mounting

Length mm	Load kg	Order No.	Unit Price
350	30	9079486	RM123.00
400		9079523	RM130.00
450		9079437	RM137.00
500		9079454	RM144.00

Quadro V6+ Full Extension Runner with Silent System Bottom Mounting

Length mm	Load kg	Feature	Order No.	Unit Price
350	50	Silent System	9135998	RM109.00
400			9136000	RM111.00
450			9136002	RM113.00
500			9136004	RM115.00
550			9136006	RM117.00
600			9136008	RM119.00
350	50	Push to Open	9136009	RM120.00
400			9136011	RM122.00
450			9136013	RM124.00
500			9136015	RM126.00
550			9136017	RM128.00
600			9136019	RM130.00

Catch for wooden drawer with grooved base

Version	Order No.	Unit Price
Quadro S , Quadro V6	9144597	RM5.00
Quadro V6+	9117492	RM7.50

Optional: Synchronisation for Quadro Push to Open

Article	Order No.	Unit Price
Synchronisation bar	9236718	RM43.00
Adapter, type A	9219966	RM3.50
Connectors	9221295	

*Used for Quadro V6, Quadro 4D V6, Quadro V6+



Quadro 4D V6 Full Extension Runner with Silent System

Length mm	Load kg	Order No.	Unit Price
250	30	9245382	RM114.00
300		9245384	RM116.00
350		9245386	RM118.00
400		9245388	RM121.00
450		9245390	RM125.00
500		9245392	RM131.00
550		9245394	RM142.00
600		9245396	RM155.50



Catch and tilt adjuster for wooden drawers with grooved bottom panel

Version	Order No.	Unit Price
Quadro 4D V6	9247529	RM21.60



Push to Open Silent opening system

Total Weight kg	Quadro kg	Nominal Length mm	Order No.	Unit Price
10 - 30	30	350 - 600	9246316	RM132.00



Optional: Synchronisation for Quadro 4D V6

Article	Order No.	Unit Price
Synchronisation bar 2000mm	9236718	RM43.00
Connectors	9221295	RM3.50

* Recommended for carcass widths of 600mm and above

KA Ball Bearing Runners



Full Extension Runner KA 5632

Length mm	Weight Tolerance kg	Feature	Order No.	Unit Price
250	40	Roll-Out Guard	1074018	RM29.00
300			1074019	RM32.50
350			1074020	RM36.00
400			1074023	RM39.50
450			1074024	RM43.00
500			1074025	RM46.50
550			1074021	RM50.00
600			1074022	RM53.50
650			9047793	RM72.50
700			9039520	RM76.00
300	45	Silent System	9221513	RM41.50
350			9221525	RM46.00
400			9221526	RM50.50
450			9221527	RM54.50
500			9221528	RM59.00
550			9221539	RM63.50
600			9128585	RM90.00
650			9128586	RM94.50
700	9128587	RM99.00		



Retractable door system KA 5740

Door Width mm (max)	Order No.	Unit Price
300	0041371	RM63.50
350	0041372	RM66.00
400	0041373	RM68.50
450	0041374	RM71.00
500	0041375	RM73.50
550	0041376	RM76.00
600	0041377	RM83.50
650	0041378	RM86.00
700	0041379	RM88.50

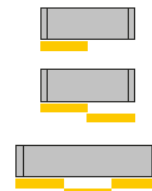
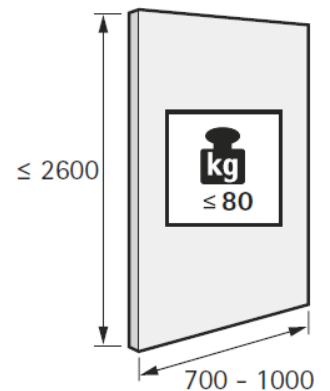
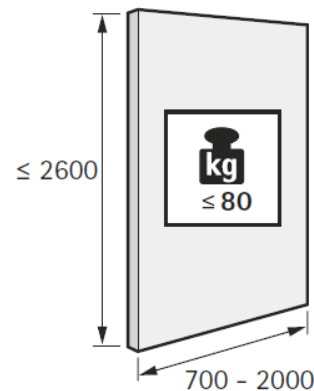
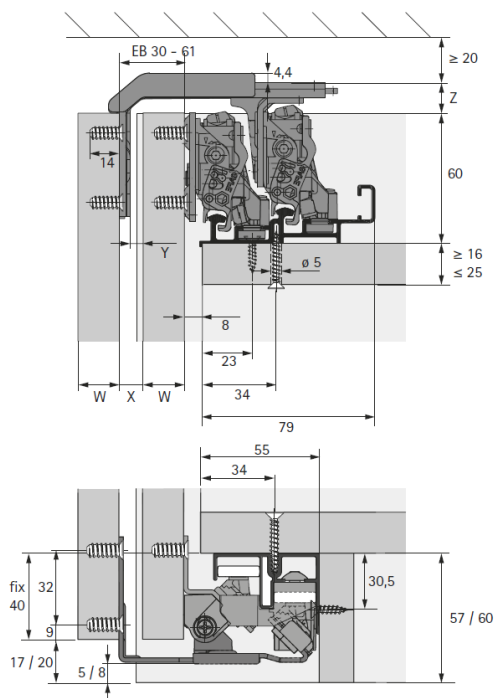
TopLine XL



Invisibly smart. Whisper quiet.

With TopLine XL, you can create sliding doors in a new dimension of luxurious convenience. Because the concealed premium quality sliding door system brings fascinatingly smooth, quiet running action to large surface doors weighing up to 80 kg. Invisibly mounted, the soft opening, soft closing and soft colliding Silent System provide perfect convenience with a feel of luxury. The TopLine XL system gives you the maximum flexibility in designing cabinets because it can be adjusted in many different ways. The fast installation of doors, Silent System and profiles saves a lot of time and money.

Door size and door weight





Profile Set

Material	Length mm	Order No.	Unit Price
Aluminium / Plastic	4000	9135004	RM695.50



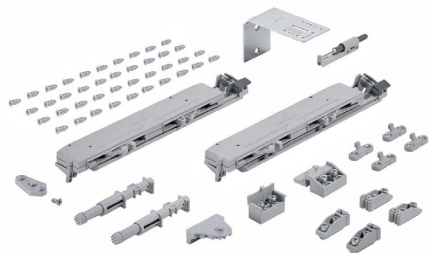
Front Most Door Sets

Max. Door Thickness mm	EB	Order No.	Unit Price
19	30	9181742	RM422.50
22	33	9183613	RM435.50
28	39	9183615	RM448.00
33	44	9193053	RM461.00
40	51	9183616	RM580.50
50	61	9183617	RM597.00



Rear Most Door Sets

Door Position	Order No.	Unit Price
left	9181744	RM273.50
right	9183533	



Silent System Sets

No. of Doors	Function	Order No.	Unit Price
1	Soft Closing / Soft Opening	9181696	RM348.50
2	Soft Closing / Soft Opening	9169548	RM486.50
3	Soft Closing / Soft Opening	9154933	RM853.00

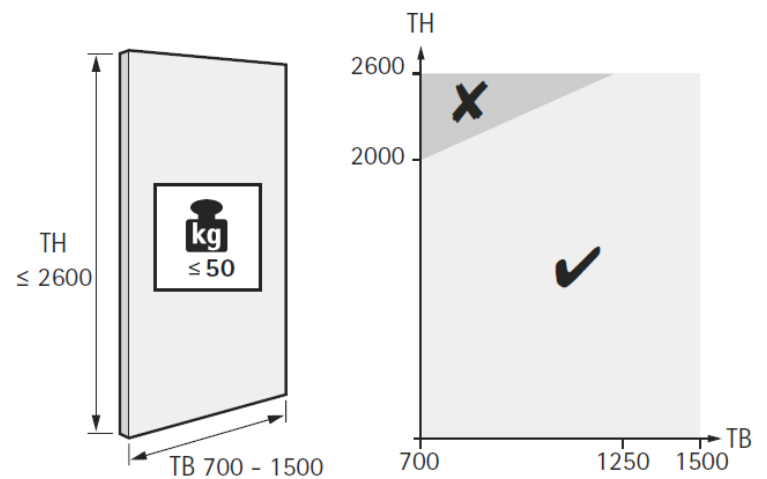
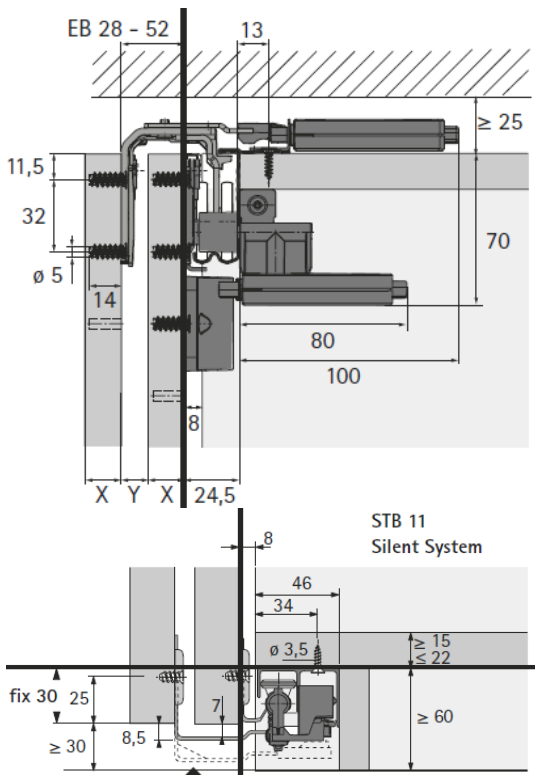
TopLine L



Multitalented system with many qualities.

TopLine L is particularly adaptable and provides the last word in user friendliness when it comes to installation and adjustment. TopLine L gives you an easy time, for example, when you need to even out tolerances. The Silent Systems create a feeling of luxury that speaks to the senses on opening and closing. Even heavy, large doors reliably close with a mere whisper. The concealed TopLine L system with door movement on the top panel is suitable for 2 and 3-door cabinets, for wood and aluminium framed front panels.

Door size and door weight



TB	700	800	900	1000	1100	1200	1250	...	1500
TH ≤	2000	2109	2218	2327	2436	2545	2600	...	2600



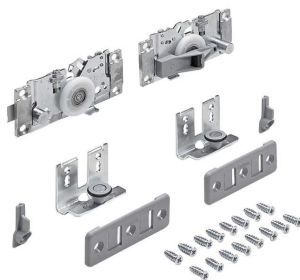
Runner and Guide Profiles

Material	Length mm	Order No.	Unit Price
Aluminium	3000	0071111	RM189.00
Aluminium	3000	0071117	RM137.00



Front Most Door Sets

Max. Door Thickness mm	EB	Order No.	Unit Price
16	28	9206483	RM212.00
19	31	9206500	
22	34	9206501	
25	37	9206502	
40	52	9206503	RM307.00



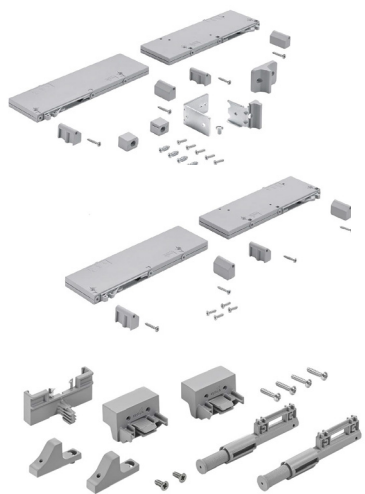
Rear Most Door Sets

Door Position	Order No.	Unit Price
left	9206505	RM136.00
right	9206506	



Accessories Sets, Door Offset: 45mm

No. of Doors	Order No.	Unit Price
2	9206309	RM30.50
3	9206310	



Silent System Sets

No. of Doors	Function	EB	Order No.	Unit Price
2	Soft Closing	28 - 37	9169651	RM173.00
2	Soft Closing	44 - 52	9169652	
3	Soft Closing, Rear Doors	28 - 52	9169653	RM162.00
3	Soft Closing, Front Doors	28 - 52	9140438	RM255.50
2	Soft Opening	28 - 52	9169637	RM155.50
3	Soft Opening, Rear Doors	28 - 52	9169656	RM319.50
2, 3	Soft Guiding	28 - 52	9199769	RM37.00

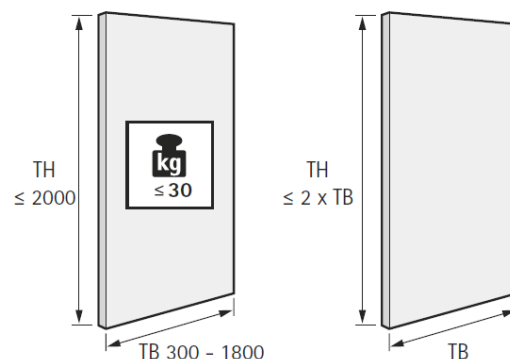
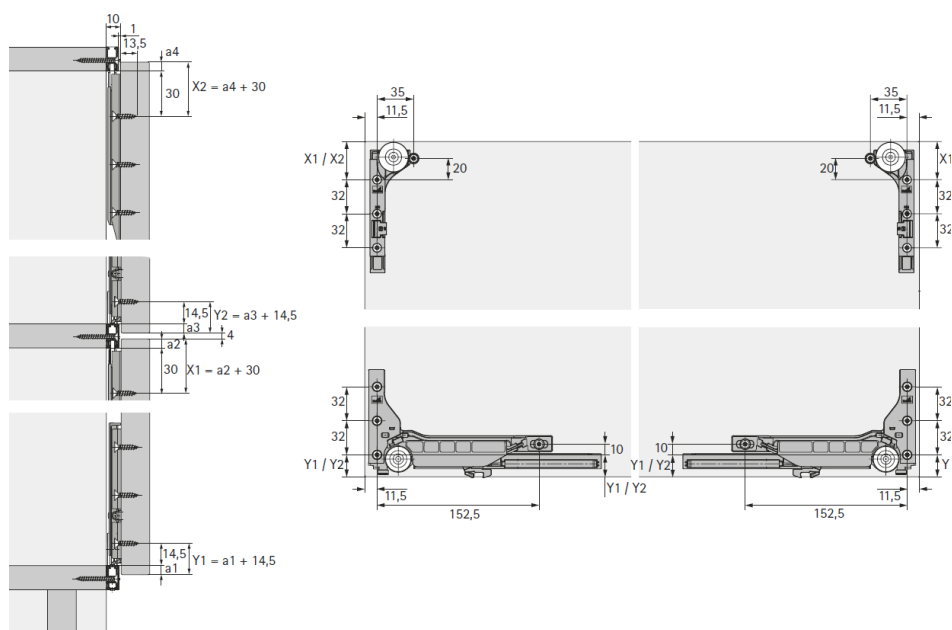
SlideLine M



Design upgrade for furniture.

SlideLine M upgrades the practical value and design of furniture. Living room units and shelf systems. Kitchen wall units and bathroom furniture. And, of course, office cabinets too. The versatile system is suitable for all common furniture constructions. Wooden, glass or aluminium framed doors weighing up to 30 kg can be installed quickly and easily. Profiles are available for several shelf thicknesses. Sliding doors running one in front of the other in one profile are also easy to produce. The Silent System is integrated on the running component and slows down door running action in closing, opening and colliding direction.

Door size and door weight

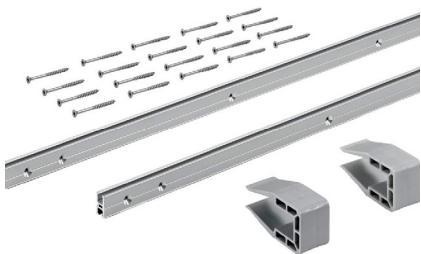


TB	300	400	500	600	700	800	900	1000	...	1800
TH ≤	600	800	1000	1200	1400	1600	1800	2000	...	2000



Fitting Sets

No. of Doors	Function	Order No.	Unit Price
1	with Silent System	9156338	RM493.50
1	without Silent System	9156339	RM362.50



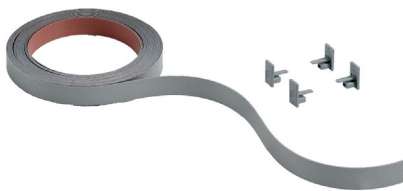
Profile Set, 2 Profiles (Overlay)

Material	Shelf Thickness mm	Length mm	Order No.	Unit Price
Aluminium	16	2500	9209165	RM321.50
	18		9209167	
	22		9209219	RM375.00
	25		9209221	



Profile Set (Inset)

Material	Length mm	Order No.	Unit Price
Aluminium	2500 (4pc set)	9227246	RM204.00
	2500	9227188	RM51.00



Coloured Cover Sets

Shelf Thickness mm	Order No.				Unit Price
	Silver	Black	White	Champagne	
16	9209232	9209269	9209272	9209274	RM56.00
18	9209277	9209279	9209281	9209284	
22	9209286	9209308	9209310	9209312	RM65.50
25	9209399	9209402	9209404	9209406	

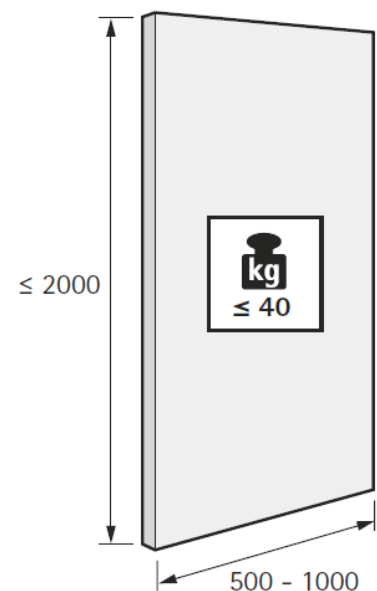
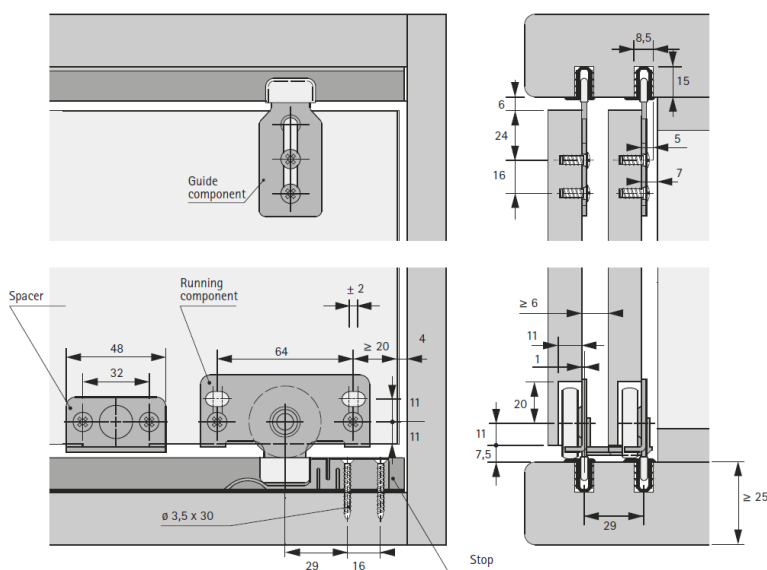
SlideLine 56



The big little one.

Universal in use. Uncomplicated technology. User friendly in everyday use. SlideLine 56 is the bottom running sliding door system with many capabilities. You can use it to move doors of heights of up to 2000 mm and weighing as much as 40 kg – not only a smart solution for sideboards but also for smaller type wardrobes. Installation couldn't be easier: rout two grooves into each of the identical top and bottom panels. Up and running!

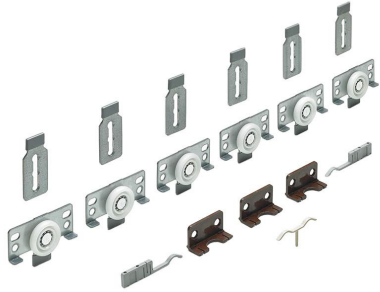
Door size and door weight





Runner and Guide Profile

Material	Length mm	Order No.	Unit Price
Aluminium	3000	9128245	RM75.00



Fitting Sets

No. of Doors	Order No.	Unit Price
2	0045234	RM62.50
3	0045235	RM92.50



Silent System Set

No. of Doors	Order No.	Unit Price
2	9079731	RM295.50

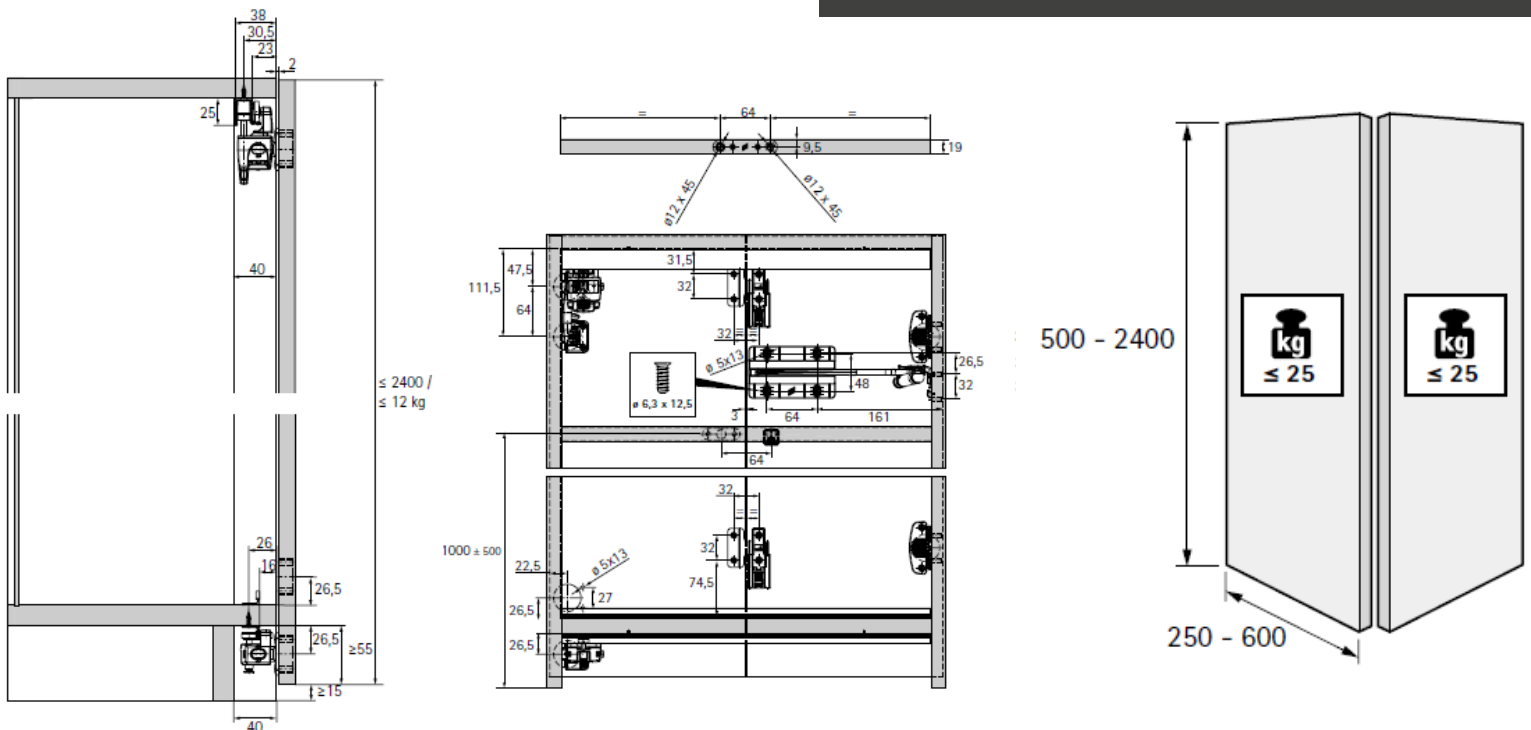
WingLine L

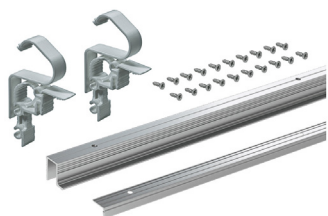


Experiencing folding doors in a new way.

WingLine L lets you produce folding sliding doors in a completely new dimension of convenience. The revolutionary Push / Pull to move opening mechanism provides access to everything inside the cabinet with just one movement of the hand. An impressive panorama effect! Further highlights: optimised running performance, soft opening and closing, tool-less installation as well as minimal door protrusion for efficiently organising the space inside. WingLine L competently and securely moves door wings weighing up to 25kg and measuring up to 2,400mm in height: a talented all rounder for the bedroom, kitchen and office.

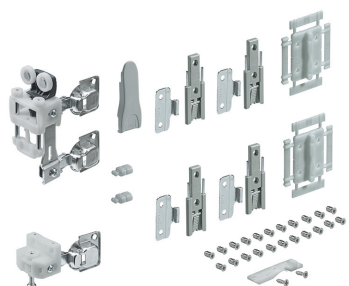
Door size and door weight





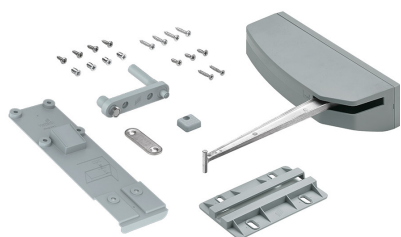
Profile Set

Length mm	Order No.	Unit Price
2400	9239310	RM159.00



Fitting Sets

Description	Order No.		Unit Price
	left	right	
For door wing weight 12kg, with spring	9237882	9237906	RM109.50
For door wing weight 25kg, with spring	9237852	9237890	RM121.00
For door wing weight 12kg, without spring	9237905	9327904	RM109.50
For door wing weight 25kg, without spring	9237880	9237881	RM121.00



Accessory Sets for WingLine L without spring

Description	Order No.		Unit Price
	left	right	
Push to move set, medium	9238051	9238101	RM184.50
Push to move set, heavy	9238052	9238053	
Pull to move silent, medium	9238121	9238124	RM160.00
Pull to move silent, heavy	9238123	9238122	

Wing 77



Tried and proven:

sturdy runner profile on the top panel as well as bottom guide.

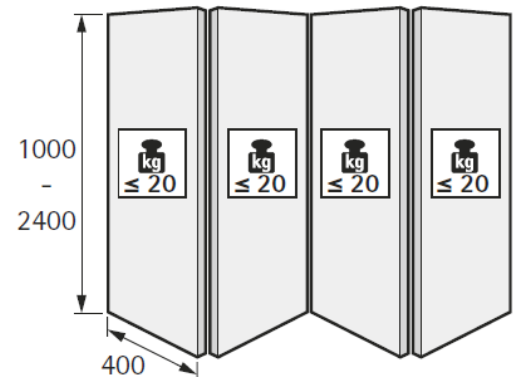
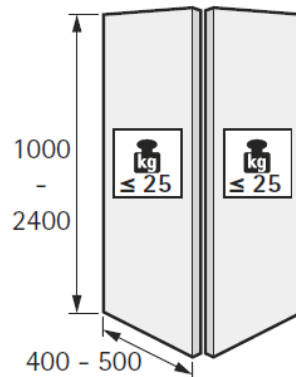
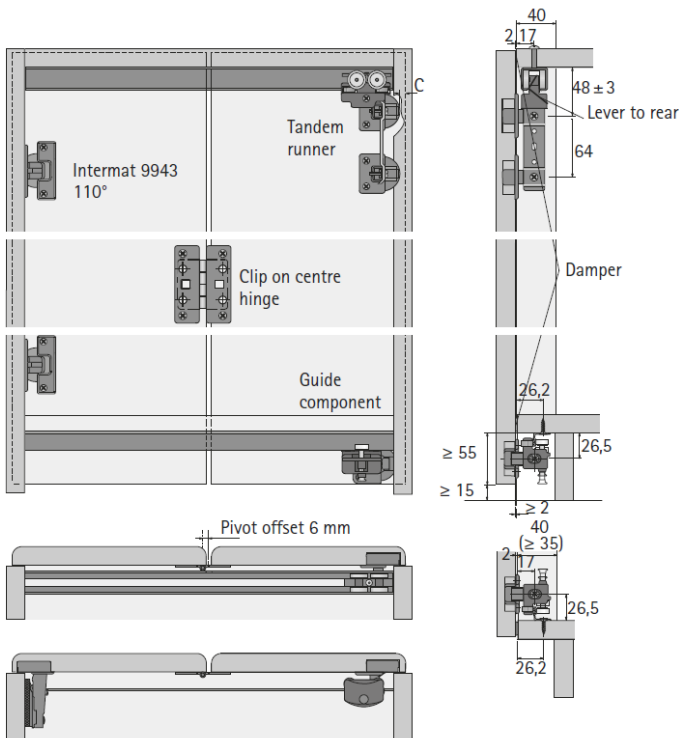
Leave a good impression:

design flexibility with up to 4 door wings. No attachment to carcass side.

Fantastic flexibility.

With Wing 77, you can produce cabinet front panels with two door wings (no more than 25 kg each) or four door wings (no more than 20 kg each). The clever part: the entire door set is free moving! Door sets can also be interlinked. Surprise your customers with individually tailored folding door solutions for the bedroom or office. Wing 77 gives you the design flexibility to do so.

Door size and door weight





Runner Profiles

Article	Length mm	Order No.	Unit Price
Aluminium runner profile	3200	9193574	RM308.50
Aluminium guide profile	3200	0070985	RM245.00



Fitting Set

Hinge Side of Cabinet	Order No.	Unit Price
2	0070986	RM430.00
4	0070987	RM800.50







General Terms of Sales and Delivery

All products and services will be provided in accordance with the General Terms of Sale and Delivery and Conditions of SH Hybrid Trading Sdn. Bhd. Prices are subjected to change without prior notice.

We reserve all rights to this catalogue under copyright law. It shall not be permissible to duplicate this catalogue in any form either in whole or in part without our written consent.

Legal Notice

SH HYBRID TRADING SDN. BHD.

The Sole Distributor of Hettich in Malaysia

Oct 2019



SH HYBRID TRADING SDN BHD is synonymous with efficiency, quality, creativity and reliability. Our specialty in supply of furniture hardware and fittings, research and develop the best quality furniture hardware for our client.



www.hettich.com

Swiss Plus (M) Sdn. Bhd. (1087339-A)

Lot 2668-1,
Kg Baru Sg Buloh,
47000 Sg Buloh, Selangor.

t 03-6140 1250

f 03-6140 1382

e swissplusmalaysia@outlook.com

Technik für Möbel



Hettich